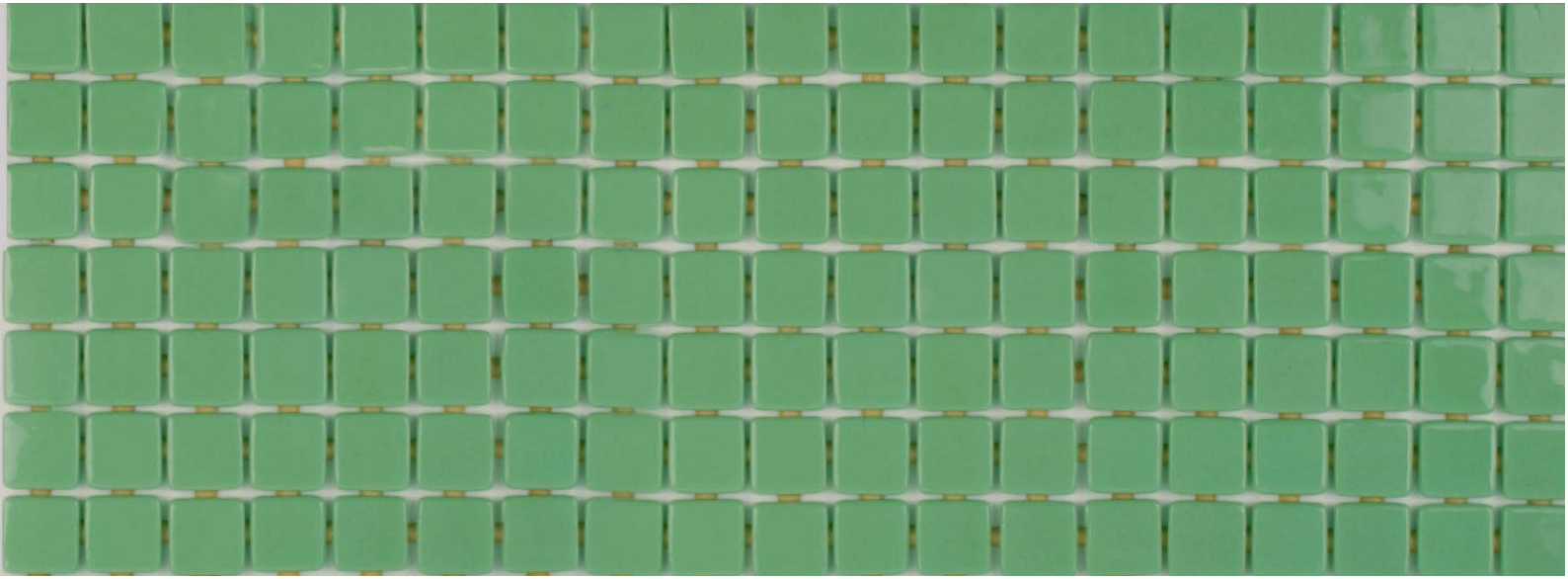


# ezarri

Dreams  
are made  
of mosaics



## 2548-C

L I S A



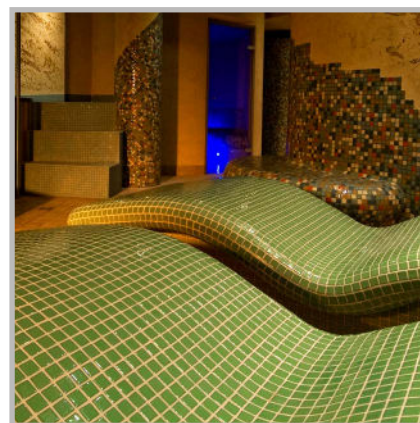
**2548-C**, from the Lisa collection, is a flat-colour mosaic specially designed for cladding interiors, swimming pools, spas, saunas and wellness spaces. Solid and striking colours.

## Available format & finish

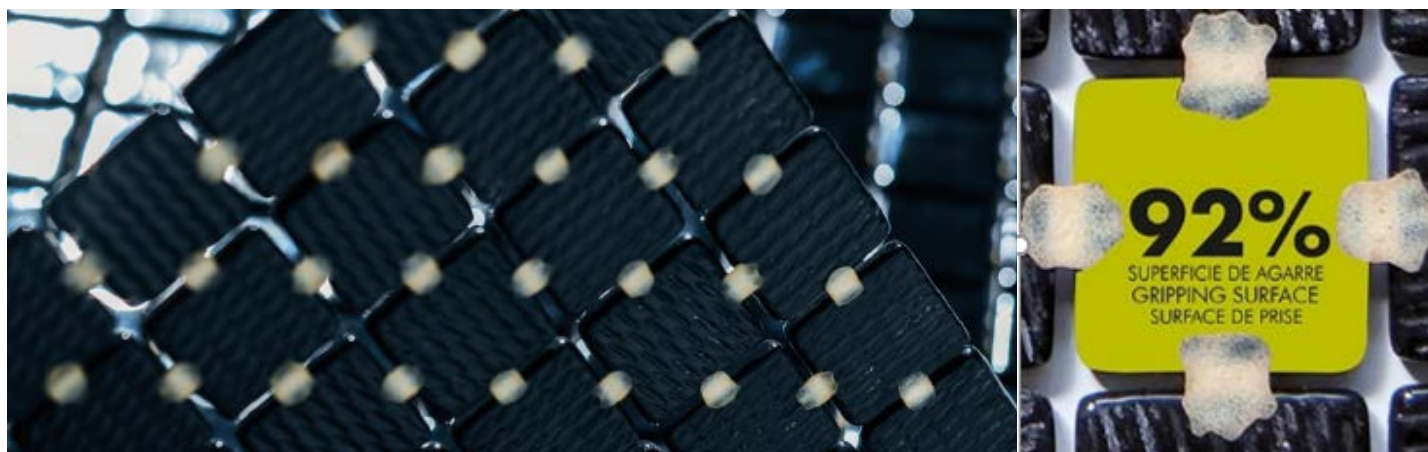
### Standard

25mm  
Standard

36mm  
Standard



## Jointpoint System



Maximum grip surface. 92% Of the mosaic's surface is free for applying the adhesive. Durability guarantee.

Ease of installation. 25% Time saving compared with the paper-based panelling system.

Excellent finishes. Thanks to the ease of installation and visual control for tile placement.

Not affected by moisture. Does not expand or contract like mesh or paper-based panelling systems.

Exclusive jointpoint adhesive formula. Jointpoint provides the perfect combination of malleability and stiffness. It is flexible and easy to cut.

Even the smallest area is uniform and controllable. Jointpoint has minimal thickness and is very uniform and controllable.

|                        |                            |                         |
|------------------------|----------------------------|-------------------------|
| Water absorption       | UNE EN ISO 10545-3         | Result: E=0,1%          |
| Scratch resistance     | UNE EN ISO 10545-7         | Classification: PEI = 4 |
| Stain resistance       | UNE EN ISO 10545-14        | Classification: 1-5-5   |
| Scratch hardness       | UNE 67101 (escala de Mohs) | Class 7                 |
| Resistance to freezing | UNE EN ISO 10545-12        | Resistant               |
| Chemical resistance    | UNE EN ISO 10545-13        | Classification: A       |