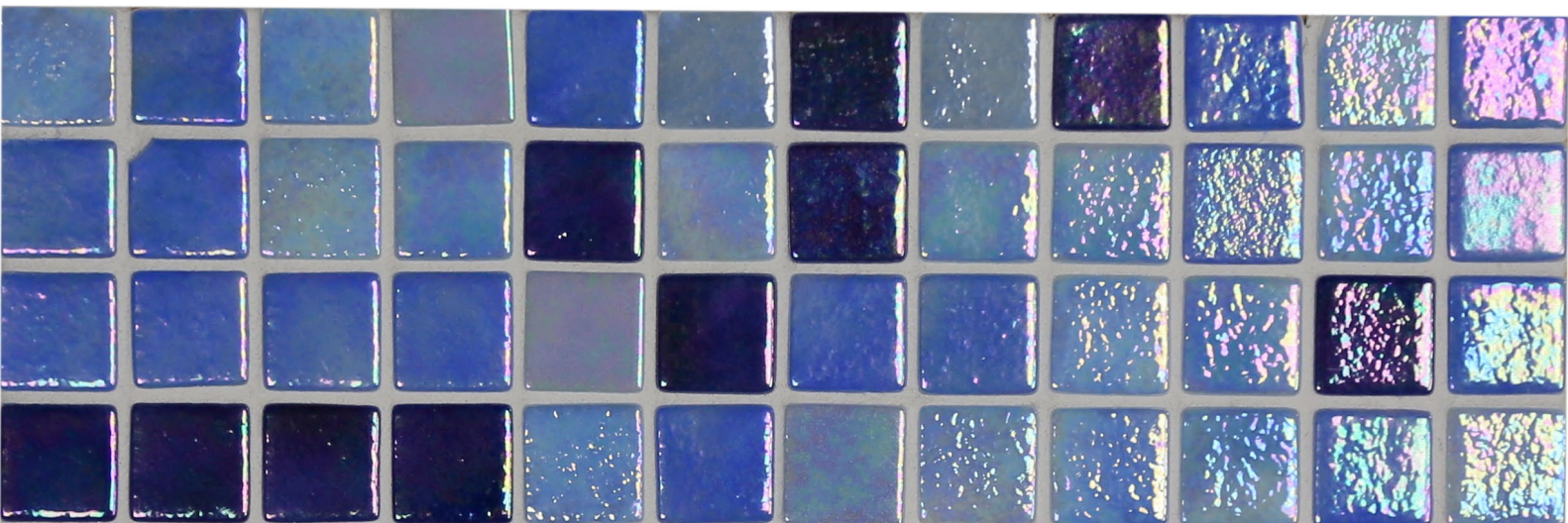


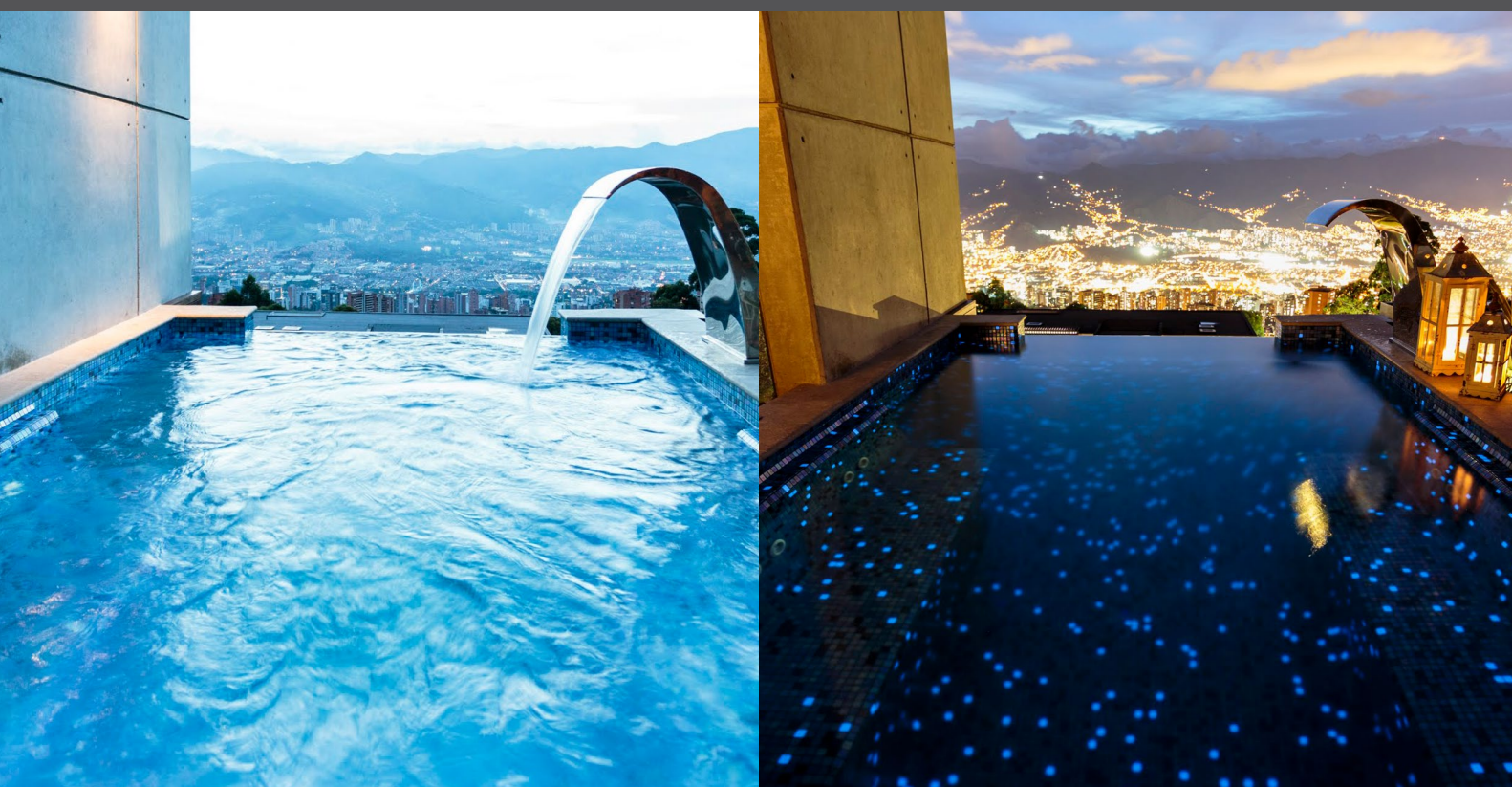
ezarri

Dreams
are made
of mosaics



Delphinus

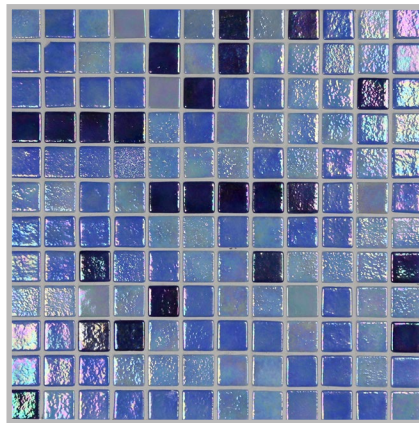
F O S F O



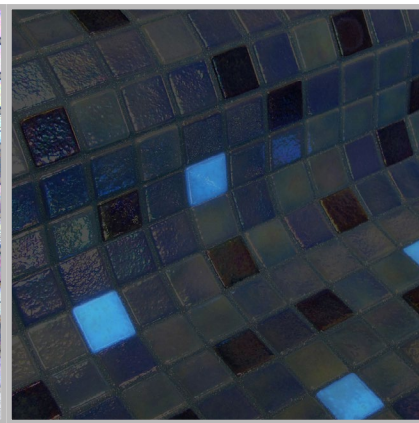
Delphinus, from the fosforescente collection, are phosphorescent mosaics which charge up in the light and glow in the dark, specially designed for cladding interiors, swimming pools, spas, saunas and wellness spaces. Surprise yourself with glow-in-the-dark mosaics.

Available format & finish

25mm
Standard



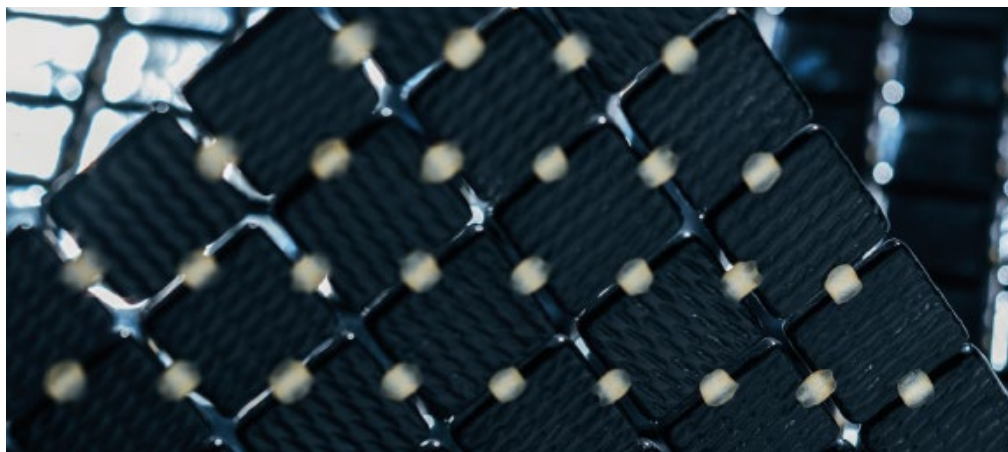
DELPHINUS DAY



DELPHINUS NIGHT

Jointpoint System

[Click to Download Test Result](#)



Maximum grip surface. 92% Of the mosaic's surface is free for applying the adhesive. Durability guarantee.

Ease of installation. 25% Time saving compared with the paper-based panelling system.

Excellent finishes. Thanks to the ease of installation and visual control for tile placement.

Not affected by moisture. Does not expand or contract like mesh or paper-based panelling systems.

Exclusive jointpoint adhesive formula. Jointpoint provides the perfect combination of malleability and stiffness. It is flexible and easy to cut.

Even the smallest area is uniform and controllable. Jointpoint has minimal thickness and is very uniform and controllable.

Water absorption	UNE EN ISO 10545-3	Result: E=0,1%
Scratch resistance	UNE EN ISO 10545-7	Classification: PEI = 4
Stain resistance	UNE EN ISO 10545-14	Classification: 1-5-5
Scratch hardness	UNE 67101 (escala de Mohs)	Class 7
Resistance to freezing	UNE EN ISO 10545-12	Resistant
Chemical resistance	UNE EN ISO 10545-13	Classification: A