

INSTALLATIONS PROCEDURES FOR FABRICATED DROP EDGE COPING - INTERNAL OR EXTERNAL SWIMMING POOL OF CONCRETE CONSTRUCTION

General

Laminated coping products are fabricated by creating a 45° miter on the edge of two pieces of materials which are joined using epoxy adhesives and clamps to create the 90° drop edge coping. The coping joint is intended to support a full installation system comprising of high-performance adhesive and grouts as well as silicone (in wet areas) that is fully bedded onto a singular and solid substrate. Although constant efforts are being made to improve the longevity of the epoxy, the epoxy alone cannot be relied upon without a supporting installation system and procedure as outlined below. Therefore, this product cannot be installed as a cantilever application (sitting out from the edge of pool).

- Note: Due to the limitations of the epoxy materials and joint strength which can be compromised by constant exposure to elements, laminated coping materials should NOT be installed in situations where it is not possible to solidly bed, adhere and protect the drop edge face (i.e., fiberglass pools) unless a warranted specification is provided by an adhesive manufacturer to accommodate the site conditions and approved by Europe Imports.
- Note 2: Similarly, it should be noted that laminated drop face coping should not be installed over an edge that is comprised of a junction where two materials of variable composition and performance characteristics (i.e., where a site mixed screed meets a render*). The pool render and screed application where the coping edge is to be installed should be prepared with a singular proprietary material, free from voids and irregularities. Substrate and materials should be prepared and installed according to AS 3958.1-2007.

Adhesives

High performance tile adhesive with a minimum classification of C2S2 or epoxy adhesive with minimum rating of R1 with deformable properties according to ISO 13007.1 suitable for permanent immersion shall be selected and specified for installation. The extent of the permanent immersion properties should be confirmed. Proprietary materials shall be used in accordance with the grout manufacturer's instructions. Refer to the manufacturer for additional information.

Grouts

High performance cementitious or reaction resin proprietary grouts (CG2 or RG minimum) complying with the requirements of AS ISO 13007.3 and AS ISO 13007.4 shall be selected and specified for their suitability to meet the service conditions anticipated. Proprietary materials shall be used in accordance with the grout manufacturer's instructions. Refer to the manufacturer for additional information.

Screeds and renders

Areas directly receiving laminated coping materials shall be either rendered and screeded in its entirety* or with an anti-fracture collar* using a singular propriety material. All propriety materials shall be selected and specified for their suitability to meet service conditions anticipated. Proprietary materials shall be used in accordance with the manufacturer's instructions. Refer to the manufacturer for additional information.

- Refer to 'Image 1 - Laminated coping installation over antifracture collar' for appropriate method.
- Refer to 'Image 2 - Laminated coping installation over singular propriety application for appropriate method.

Expansion Joints

Structural movement joints shall be carried through the tile application and expansion joints incorporated into the tile layout according to the structures design (i.e. all corners, changes in planes, horizontal/vertical junctions and at 3m intervals in all other areas). Installation and design shall be in accordance with AS 3958.1-2007

Bedding

Both the body and drop face of the laminated coping shall be bedded into the prepared substrate in such a way as to achieve 100% adhesion contact that is free from any voids.

- NOTE: DO NOT install the drop edge over mosaic tiles. Tile over tile application is a specialist application requiring specialist installation materials and techniques. Contact your adhesive manufacturer for written advice if the mosaics have been installed where coping edge should be bedded. Alternatively, exchange materials for a pencil round or bullnose

Storage and handling

Laminated coping materials should be stored in the pallets/crates undercover or in the shade, out of direct sunlight and covered with a tarp. Materials should be only unpacked as required for installation and installed as soon as practically possible. Do not leave the rebated coping pieces upside down in full sun for prolonged periods, this is to protect the epoxy joint from UV damage.

INSTALLATION INSTRUCTIONS

1. Prior to the installation of any materials, the surfaces should be swept with a clean broom, mopped and or vacuumed until the surface is clean and free from dust, debris, oil, dirt, and ponding water.
 2. All sub straights to receive fabricated laminated drop face coping shall be prepared with propriety materials installed according to AS 3958.1-2007. The pool render and screed application where the coping is to be installed should be prepared with a singular proprietary material, free from voids and irregularities. See image 3.
 3. Waterproofing shall be applied to all areas subject to calcification and efflorescence. These areas include but are not limited to the coping edge and waterline. All waterproofing membranes should be installed according to the manufacturer's specifications and AS 3958.1-2007. See image 3.
- *Refer to 'Image 3 - Appropriately designed and prepared substrate ready for tile application
4. Inspect each laminated drop face porcelain coping piece at the joint between the face and body to ensure that each piece have been jointed and adequate adhesion has been achieved during production. If the epoxy joint has visible voids, gaps or has become flaky, discard the piece, and contact the supplier.
 5. Prior to set out of coping materials, consideration should be made for structural movement joints and the appropriate incorporation of expansion joints in the tiling system. Structural movement joints shall be carried through the tile application and expansion joints incorporated into the tile layout according to the structures design (i.e. all corners, changes in planes, horizontal/vertical junctions and at 3m intervals in all other areas) in accordance with AS 3958.1-2007
 6. Use a high-performance tile adhesive with a minimum classification of C2S2 or epoxy-based adhesive with minimum rating of R1 according to ISO 13007.1. Adhesive should be worked/keyed into the horizontal and vertical substrate that is to receive the laminated drop face porcelain coping piece using a 10-12mm notch trowel. The laminated drop face porcelain coping should be prepared using the back butter method as specified by AS 3958.1-2007 taking care to cover the back surface entirely & the back of the mitred rebate, ensuring both areas have received 100% adhesive coverage prior to fixing. See images 4 & 5.
 7. Once the surface is keyed and the laminated drop face porcelain coping back buttered, while still fresh and workable, install the laminated drop face porcelain coping by beating firmly into the workable adhesive bed using a rubber mallet. Ensure an adequate contact area of 100% is achieved and all air pockets removed. It is recommended to periodically remove a tile after beating it firmly into place to ensure that adequate adhesion has been achieved. See image 6.
 8. Remove excess adhesive from the joints and drop face edge to allow for sufficient grout to be installed and expansion materials incorporated in accordance with AS 3958.1-2007 including where the coping edge abuts the mosaics. Refer to images 1 and 2.
 9. After the adhesive has cured according to the manufacturer's recommendations, use a CG2WA cementitious grout or RG epoxy resin grout according to ISO 13007.3 to grout the laminated drop face porcelain coping according to methods outlined in AS 3958.1.
 10. Allow for sufficient silicone installation area between the mosaic and laminated coping edge when installing waterline mosaics and apply a continuous and full bead of a suitable silicone in accordance with AS 3958.1-2007. Refer to images 1 and 2.

Disclaimer

Absolutely no claim will be accepted if the installation methods described within this document have not been adhered to in full. Claims that are accepted will be for replacement of materials only, not labor or installation material costs.

For a 15-year warranty, follow the Laticrete Australia specification which has been written for Europe Imports fabricated drop edge coping materials. Available for download [HERE](#)

All Inspections and checks of materials must be made prior to installation within a 14-day period after delivery. Any claims must be expressed in writing to the management within the 14-day period. Please contact Europe Imports Pty Ltd on 1300 392-774 to discuss any of these terms or to discuss any claims. Europe Imports Pty Ltd will only accept claims for exchange or replacement of products within 14 days of the delivery of any goods.

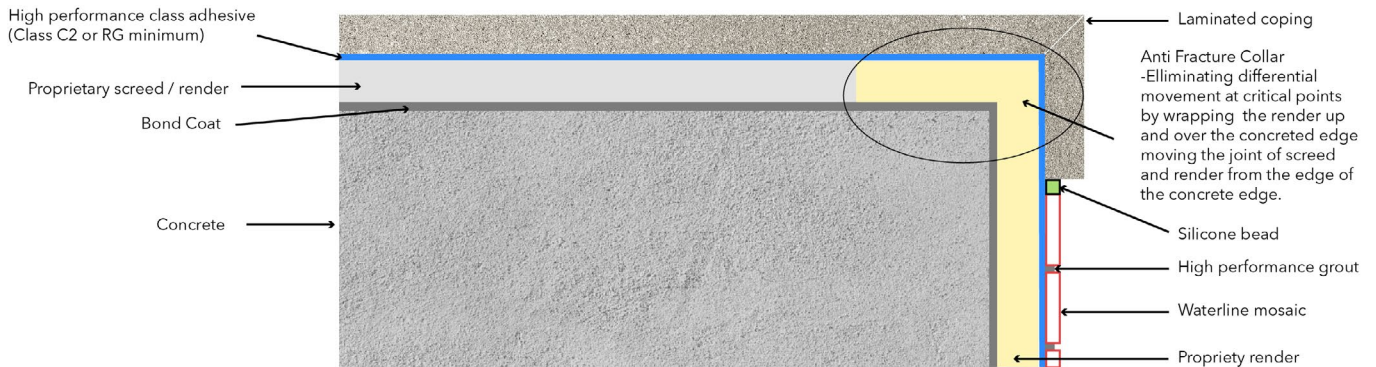


Image 1 - Laminated coping installation over anti-fracture collar

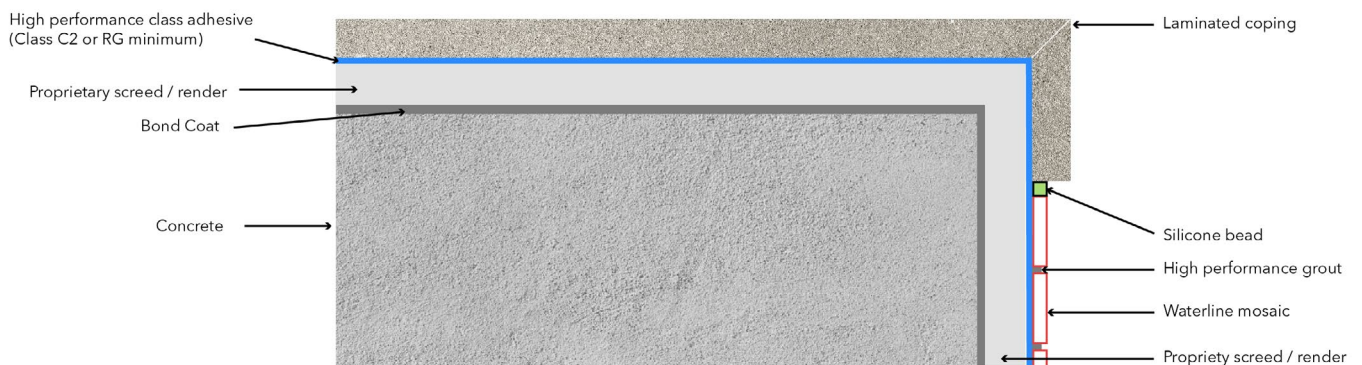


Image 2 - Laminated coping installation over propriety screed and render



Image 3 - Appropriately designed and prepared substrate (including waterproofing system) ready for tile application.



Image 4 - Back buttering 100% of the tile prior to installing onto substrate.



Image 5 - Applying adhesive to both horizontal and vertical areas of substrate using a notched trowel.

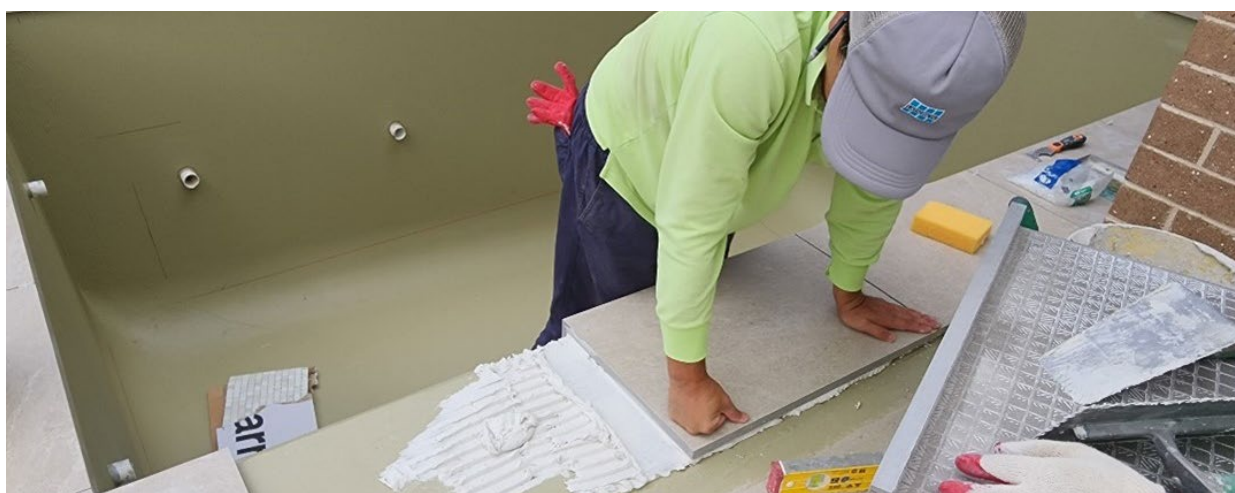


Image 6 - Firmly applying back buttered tile onto notched substrate.