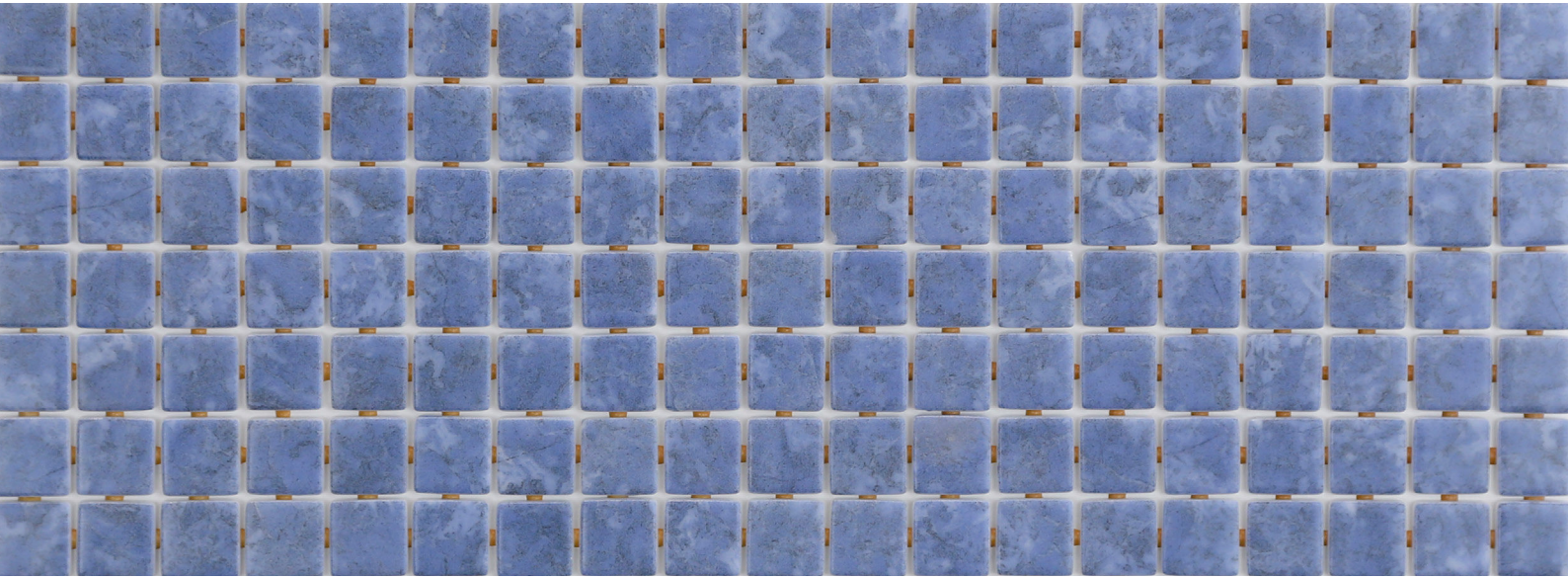


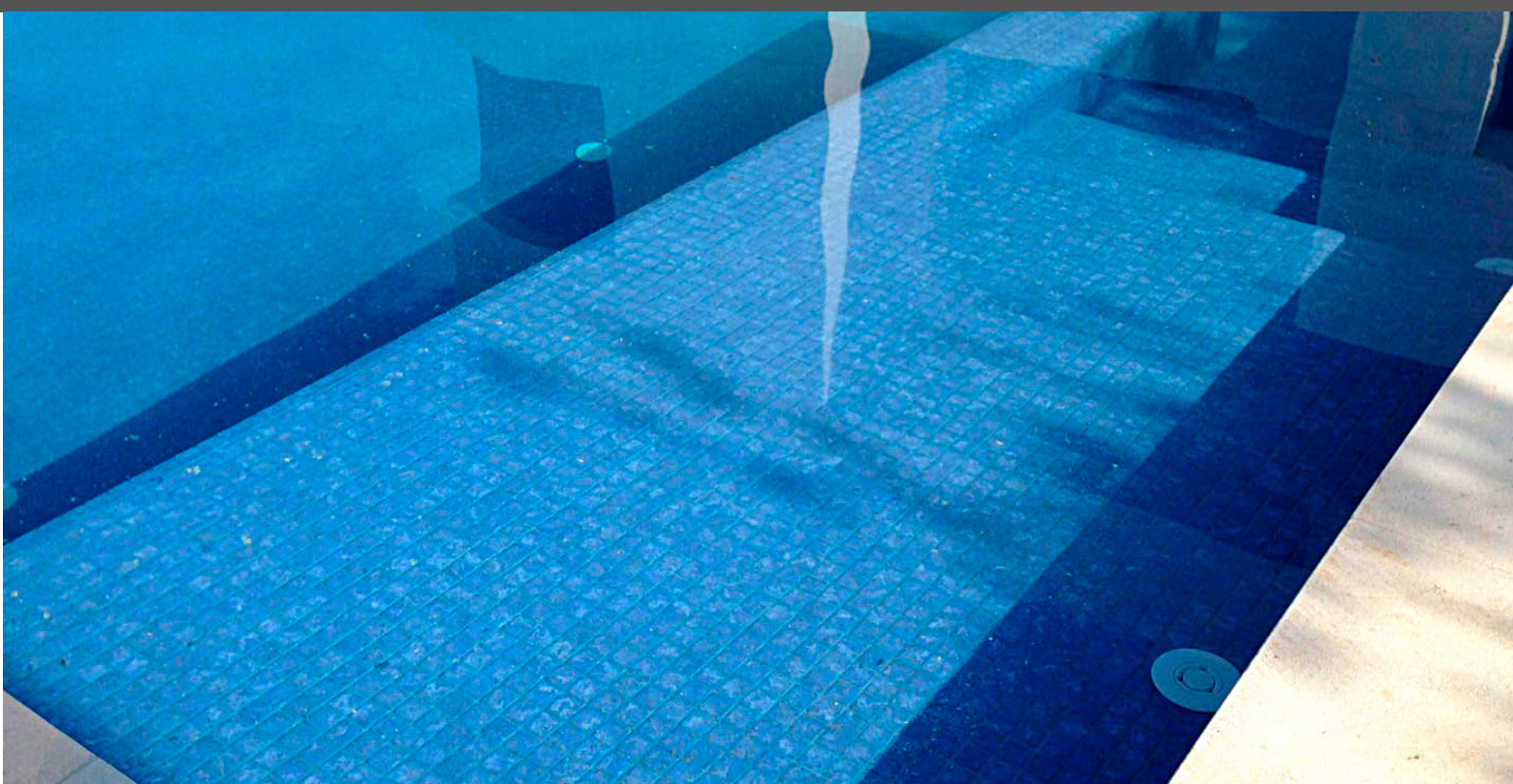
ezarri

Dreams
are made
of mosaics



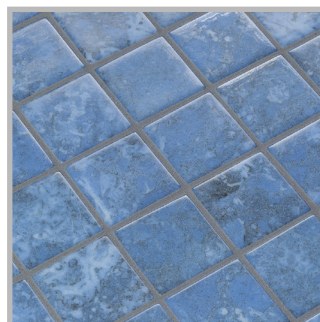
Blue Stone

ZEN COLLECTION



Blue Stone, from the Zen collection, is a matte marbled mosaic specially designed for cladding interiors, swimming pools, spas, saunas and wellness spaces. Anti-slip mosaic. Sometimes simplicity is the expression of complex elegance.

Available formats & finishes

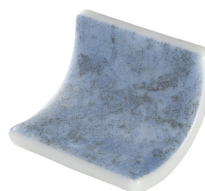
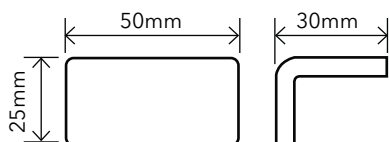
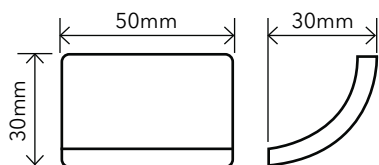
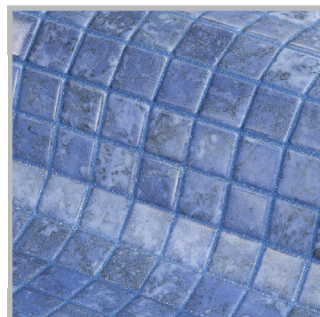


Special Pieces

With the same texture as our non-slip mosaics, our Corner and Cove pieces create a premium finish for your project. They are perfect for finishing off the corners of steps, pool edges and transitions between floors and vertical walls.



Corner



Cove



Blue Stone Safe Step

Indicative test results P5 (testing done upon request)

Blue Stone Safe, this mosaic is with the Safe-Steps system, an extremely safe non-coarse, anti-slip mosaic, designed to be as safe to walk on as a pavement. Anti-slip mosaic for swimming pools, bathrooms, built-in showers, spas and wellness spaces. Safety or beauty? There's no need to choose.

Jointpoint System



Maximum grip surface 92% of the mosaic's surface is free for applying the adhesive. Durability guarantee.

Ease of installation. 25% time saving compared with the paper-based panelling system.

Excellent finishes. Thanks to the ease of installation and visual control for tile placement

Not affected by moisture. Does not expand or contract like mesh or paper-based panelling systems.

Exclusive jointpoint adhesive formula jointpoint provides the perfect combination of malleability and stiffness. It is flexible and easy to cut.

Even the smallest area is uniform and controllable. Jointpoint has minimal thickness and is very uniform and controllable.

Water absorption	UNE EN ISO 10545-3	Result: E=0,1%
Scratch resistance	UNE EN ISO 10545-7	Classification: PEI = 4
Stain resistance	UNE EN ISO 10545-14	Classification: 1-5-5
Scratch hardness	UNE 67101 (escala de Mohs)	Class 7
Resistance to freezing	UNE EN ISO 10545-12	Resistant
Chemical resistance	UNE EN ISO 10545-13	Classification: A